



Bring it on!

From wild and woolly to hot and sunny, this Coaster holds its own in any weather

This snug and sturdy home is just the place to be on the wildest West Coast day, or the finest.

What chance has rain against that gabled and hipped roof or those wide soffits above walls clad in Linea weatherboard, Colorsteel and ancient greystone? Orange Homes West Coast can tell you. None.

Repelling as the three bedroom, 235sqm house is to precipitation, it couldn't be more amiable towards Tasman Sea views or the al fresco life. That's a proper Coaster for you. Ready for anything, and with a style uniquely its own.

Coasters are resourceful, too. A

possibly unique aspect of the build is that the open-plan living area's kitchen was designed, built and installed by the owners' daughter. We want modern and practical, said the parents. We want sea views. And because the kitchen's part of the main living area, we'd like it to knock our guests socks off. That it does, with extra thick (60mm) stainless steel and granite bench tops, black melamine cabinetry instead of conventional white, and a glassed island bench with soft close drawers and shiny stainless steel brackets.

Her father helped, spraying the cabinetry in charcoal to a gloss and baking it at high temperature to create

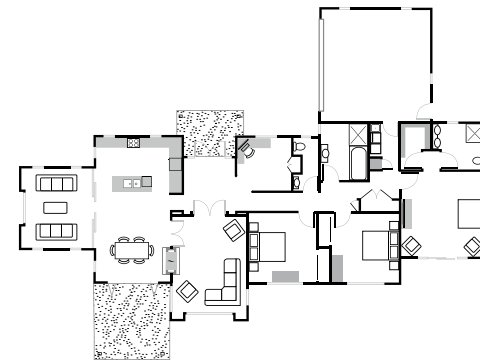
hard and durable work surfaces.

The living area's, clean lines are mellowed by old railway sleepers which also make a statement in both bathrooms – standing vertical as a finishing medium to the gorgeous natural stone lining the showers.

PlaceMakers WINNER – PLACEMAKERS '14 HEAR t of th E ho ME Kl t CH EN AWARD

PlaceMakers WINNER – PLACEMAKERS '14 BA th Roo M EXCELLENCE AWARD

W INNER – o ut Doo R L Iv IN g A WARD



Orange Homes West Coast Ltd

Christchurch

mob 027-432 7332

greg@orangehomes.co.nz, www.orangehomes.co.nz

