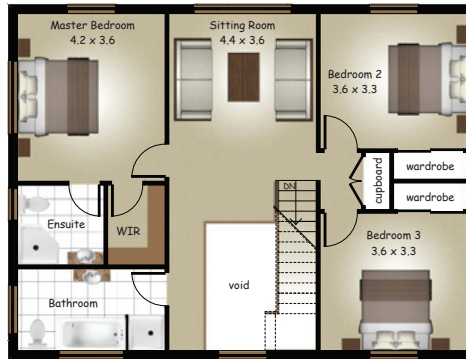


Palamino

Design features

- 249sqm
- L: 18.1 W: 14.9
- Traditional home with verandah
- Grand entry open to upper floor
- 4 bed with guest on ground floor
- Additional living upstairs

First Floor



Ground Floor



Artist's impression of perspective and plan.
 Plans can be mirror imaged and dimensions should
 be checked with Orange homes.
 Copyright exclusive to Orange homes 2005 Ltd.



245 Annex Road
 Sockburn, Christchurch
 03 343 3955 www.orangehomes.co.nz