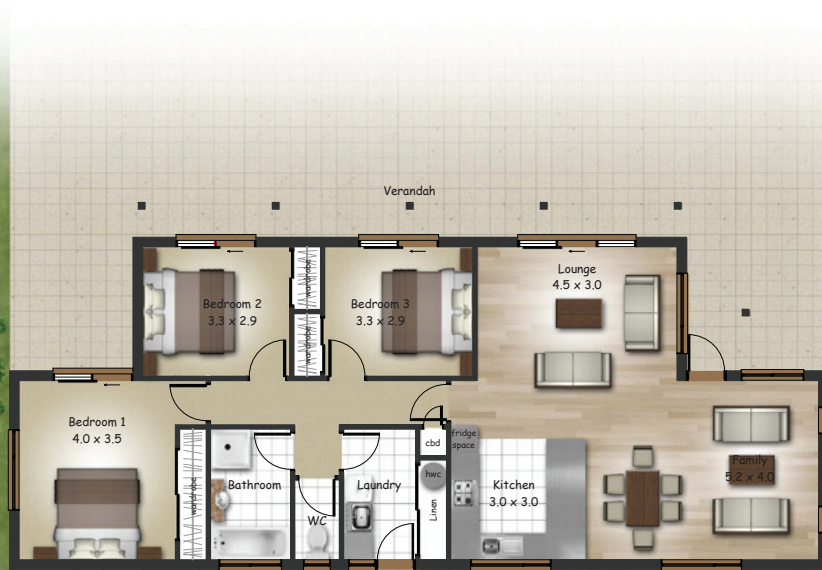




Dartmoor

Design features

- 118sqm
- L: 18.4m W: 7.5m
- 3 bedroom
- No garage
- Open plan living
- Separate laundry
- Verandah lends to a more rural feel



Artist's impression of perspective and plan.

Plans can be mirror imaged and dimensions should be checked with Orange homes.

Copyright exclusive to Orange homes 2005 Ltd.



245 Annex Road
 Sockburn, Christchurch
 03 343 3955 www.orangehomes.co.nz